

SAFFRON WALDEN

REPORTER

incorporating
THE SAFFRON WALDEN PROPERTY NEWS

MAY 2, 1996

SU'S ON THE TRAIL OF A HI-DE-HI-WAYMAN



THE STORY of England's most notorious highwayman was re-enacted at his birthplace in Hempstead last week with a little help from actress Su Pollard.

The star of television's *Hi-De-Hi* paid a visit to the Bluebell Inn and dressed up as Dick Turpin to film a 15 minute

programme for Kingfisher Television to be screened by the BBC at the end of the month.

Dick was born in the pub, known then as The Bell Inn, in 1705 and worked in a butchers shop next door from where he is said to have spied on his next victims.

Following his exploits around the country, Hempstead's most famous son was executed in York in 1739.

Pictured above are Su Pollard and landlord of the Bluebell Inn Richard Car-

Stand and deliver!



Actress Sue Pollard on the trail of Dick Turpin. Picture: Michael Hall. 3138962

NOTORIOUS highwayman Dick Turpin has returned to haunt his birth place — disguised as actress Su Pollard.

The BBC's *Hi-de-Hi* comedy series star demonstrated how Dick Turpin used a spy hole from a butcher's shop into the Bluebell pub, Hempstead, to select his next wealthy victim as he drank in the bar.

Su dressed up as Dick for a 15-minute film on the highwayman by Kingfisher Television, which is due to be screened on BBC television at the end of May.

Dick was born at what was then known

as The Bell Inn in 1705 and worked in the butcher's shop, in addition to his highwayman exploits, until he ran away to York where he was arrested and hanged at the age of 34.

The present landlord of the pub, Richard Carter, said: "He was a real villain who killed a few people. It's strange that tourists come by the coachload to see his birthplace but no-one is interested in William Harvey, who is buried in the village and who discovered the circulation of blood around the body.

"It seems that you have to be bad to get noticed."

Saffron Walden Weekly News
May 2 1996

A man and a woman, both in their 30s, were arrested by Cambridge police as a result of the incident, which happened on Tuesday night.

The pair have now been released, the 30-year-old woman without charge, the 34-year-old man on police bail until June 27. Police appealed for witnesses to come forward.

A post mortem examination showed Mr Twinn died from natural causes.

A police spokesman said: "The post mortem examination carried out by Home Office pathologist Nat Cary revealed death to be due to natural causes.

"However, the incident is still being investigated by police."

NEWS INDEX

'Super village' halt
PLANS for a "super village" on the edge of Cambridge have been put on ice.
■ Page 3.

Bomb blast in London
ANTI-terrorism experts were today investigating a suspected new IRA bomb attack after an explosion in London.
■ Page 5.

The security of Cambridge University's largest computer network.

At the university the Internet raider had access to the private passwords and files of up to 10,000 academics and students for at least four weeks before the scam was uncovered.

It is thought that no information was stolen, but the university's Computing Service that runs the system has warned all of its users to change their passwords in a bid to plug the breach in the network's security.

Dr Brian Westwood, deputy director of the

Computing Service, said: "It's very irritating and disruptive — they managed to pick up everything on the Ethernet, including our mail system.

"It's somebody who is not particularly skilled but they found a loophole that nobody knew about and now nearly 10,000 people have to change their passwords."

The alarm was raised by a network security system, which links Britain's universities together.

Co-ordinator Dennis Jackson said: "Information recovered while investigating a breach elsewhere suggested there was a problem in Cambridge."

According to a Computing Service notice: "A 'sniffer' programme was discovered to be running on that part of the Ethernet on which many Computing Service

identities and passwords and then use the information to gain access to confidential files.

Mr Jackson said: "I believe they just had an interest in seeing how many different machines they could get into.

"But an enormous number of people have been inconvenienced by this activity and if this intruder is identified, it could lead to a criminal prosecution."

Offences under section three of the Computer Misuse Act, which covers the incident, can carry a penalty of up to five years imprisonment, Mr Jackson added.

Dr Westwood said the whole operating system was already in the process of being replaced, a process that should be completed within the next few weeks.

■ Turn to Page 3.



Stand and deliver . . . Dick Turpin, alias Su Pollard, gets to grips with landlord Richard Carter.

Picture: Michael Hall. 31389622

Su turns into a Hi-de-Hi-wayman

NOTORIOUS highwayman Dick Turpin has returned to haunt his birth place — disguised as actress Su Pollard.

The BBC's *Hi-de-Hi* comedy series star demonstrated how he used a spy hole from a butcher's shop into the Bluebell pub, Hempstead, to select his next wealthy victim.

Su dressed up as Dick for a 15-minute film on the highwayman by Kingfisher Television, which is due to be screened on BBC television at the end of May.

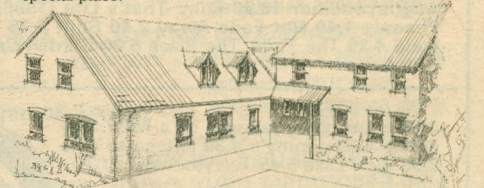
Dick was born at what was then known as The Bell Inn in 1705 and worked in the butcher's shop, in addition to his highwayman exploits, until he ran away to York where he was arrested and hanged at the age of 34.

The present landlord of the pub Richard Carter said: "He was a real villain who killed a few people. It's strange that tourists come by the coachload to see his birthplace but no-one is interested in William Harvey, who is buried in the village and who discovered the circulation of blood around the body.

"It seems that you have to be bad to get noticed."

Please Help Us Build a Brighter Future for People with Autism

Autism is a communication disorder which isolates sufferers. At worst, some autistic people need constant supervision to prevent them harming themselves. For those at this end of the spectrum, the kind of home which allows them to maximise their potential has to be a very special place.



It is a sad fact that, at present, there are no specialised services for people with autism in Cambridgeshire. And the need becomes all the more urgent in the face of increasing demand.

Until now, the difficulty of providing effective care for these people has often been little more than compassionate containment. With your help all this can change. Our planned development will really meet the needs of these forgotten few as well as providing them with safe and attractive living conditions.

Please Send Your Donation to:

East

East Anglian Autistic Support Trust

52 Windsor Road, Cambridge CB4 3

Registered Charity No. 1009836. This advert